



RMS BRINGELLY RD & THE NORTHERN RD UPGRADE, STAGE 2

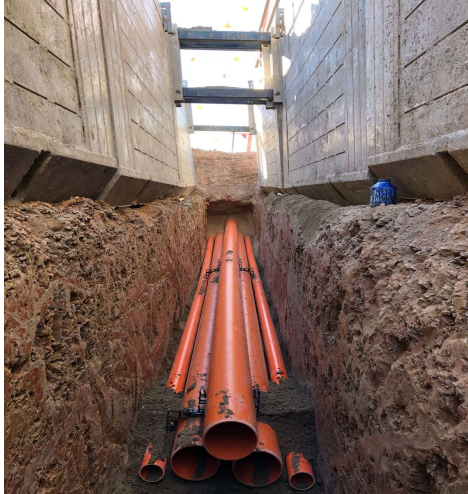


Image: Installing deep trench 132kV conduits

Contract Type

Subcontract Agreement with GC21 provisions

Client

Lendlease Engineering

Value

\$33M

Duration

January 2018 – July 2020

Location

Bringelly Road & The Northern Road, Bringelly

Completed the 132kV relocation six weeks ahead of schedule, allowing for early road construction access for our client. Design of temporary HV/LV packages.

Nature and scope of works

- Install 32,460m-off distribution footway conduits
- Install 4600m-off distribution roadway conduits
- Install 2,040m-off transmission 132kV conduits
- Install 1,275m-off HDD 132kV conduits
- Haul 5,510m-off 1200mm² - 1Core 132kV cable
- Haul 5,040m-off 800mm² - 1Core 132kV cable
- Haul 2,320m-off 240mm² - 1Core Earth cable
- Haul 1,545m-off 144Core Fibre Optic cable
- Haul 1,100m-off 60 Core Fibre Optic cable
- Haul 17,740m-off 240mm² - 3Core HV cable
- Haul 18,600m-off 240mm² - 4Core LV cable
- Haul 38,270m-off 16mm² - 4Core SL cable
- String all required SL, LV, HV & 132kV overhead conductor
- Install 152-off LV pillars
- Install 650-off Type 3 rag bolts
- Install 650-off streetlight columns
- Install 650-off streetlight outreaches
- Install 650-off streetlight luminaires
- Install all required streetlight control points (SLCP)
- Install 19-off 315kVA padmount substations
- Install 47-off new distribution timber poles
- Install 22-off new transmission 132kV concrete pole
- Remove 263-off existing distribution timber poles
- Remove 43-off existing transmission 132kV concrete poles
- Install all required SL, LV, HV & 132kV pole constructions
- Install 76-off overhead service connections to existing properties
- Install 3-off 132kV 8mx3m Joint Bays.
- Install 5-off 132kV UGOH constructions
- Install 3-off 132kV Straight Through Joint (STJ)

Referee

Lendlease Engineering
Mr Louis Sultana
Utilities Manager